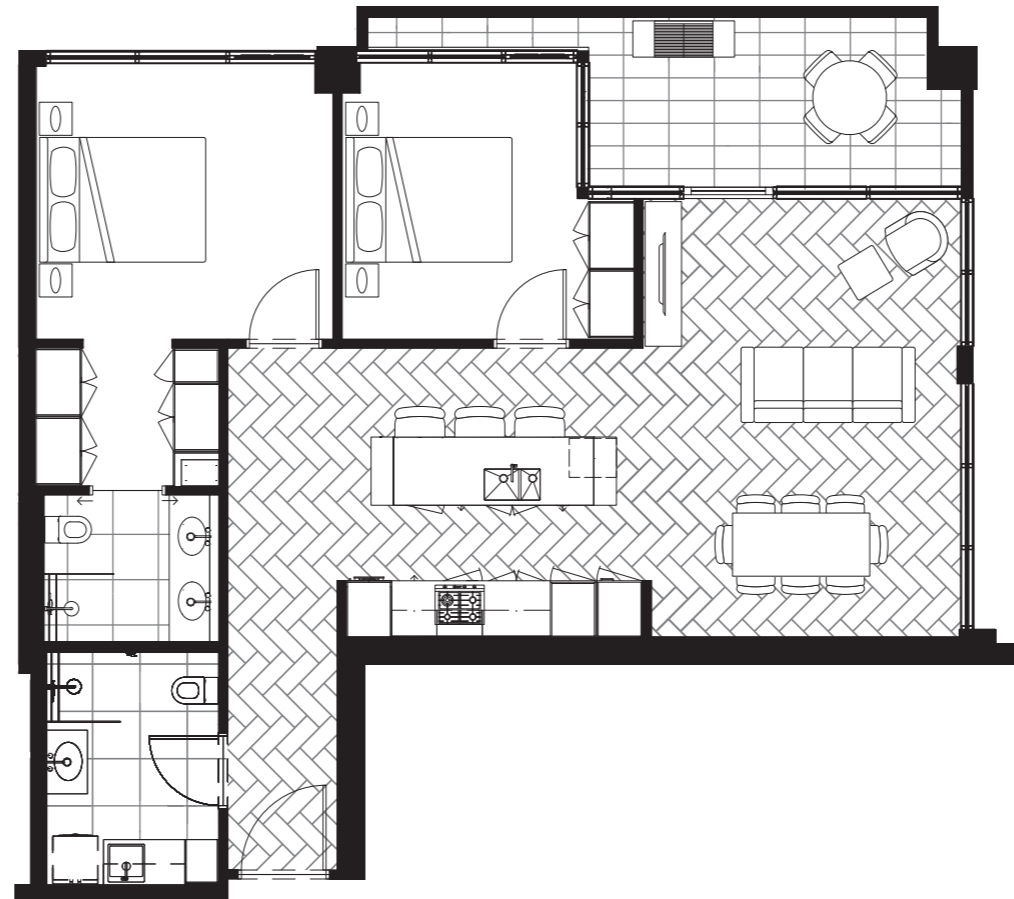


Type 2D

Two Bedroom
Two Bathroom
One Car Park on title and one under licence*

Northerly aspect

Price: \$1,100,000 - \$1,380,000



*Conditions apply, details available from the Sales Manager

0M Scale 1:100 5M

Typical Levels



Internal	102m ²
External	12m ² or 78m ² . 12m ² balcony shown
Total	114m ² or 180m ²
Apartments	1.3, 2.3, 3.3, 4.3, 5.3, 6.2, 7.2, 8.2, 9.2
Scheme	Light and dark options available